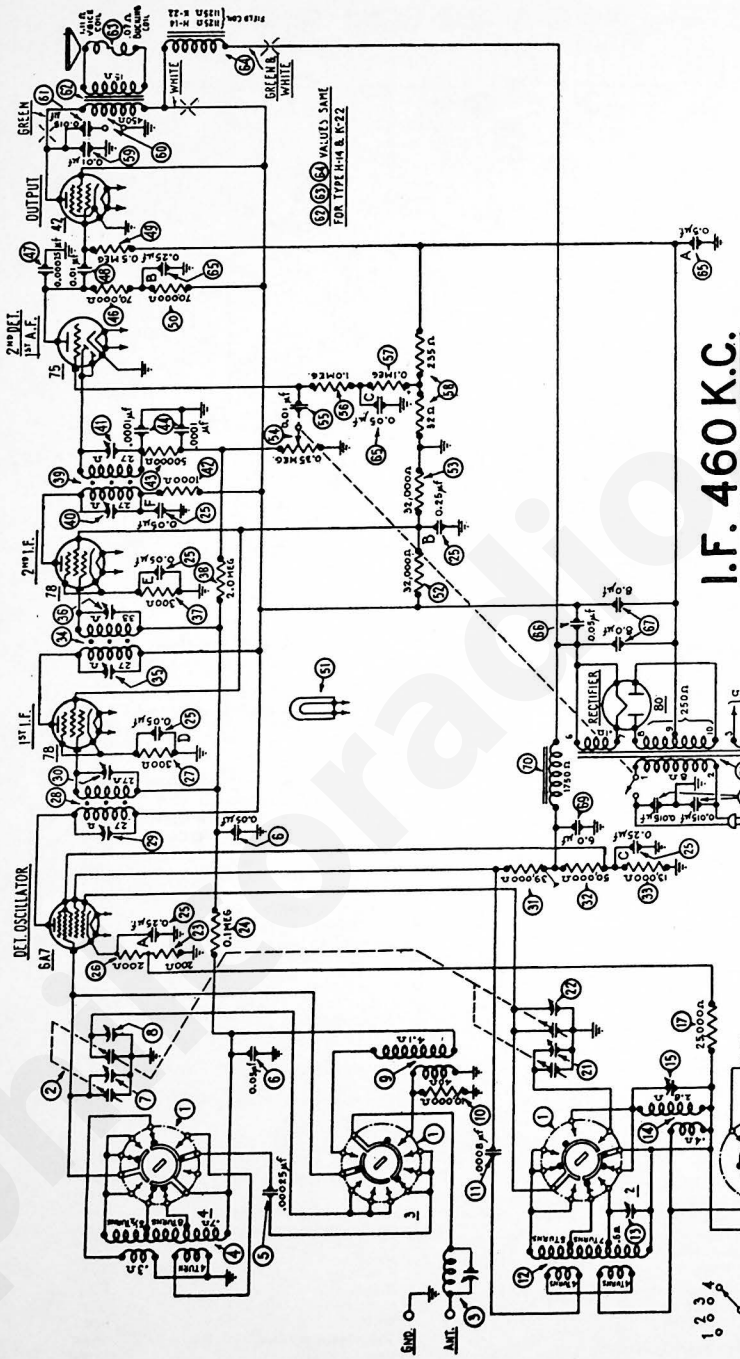
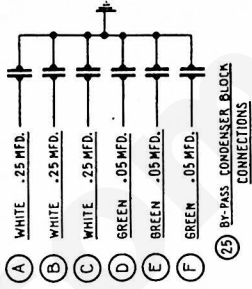
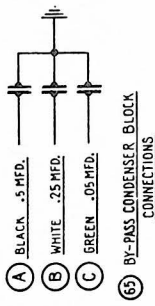


MODEL 44



I.F. 460 K.C.

(32) (34) VALUES SHOWN FOR TYPE R-4 & R-22



NOTE: ALL SWITCH SECTIONS SHOWN IN POSITION IN 2.

NOTE: FIGURES INDICATE RELATIVE POSITION OF SWITCH SECTIONS FROM FRONT OF CHASSIS



MODEL 44

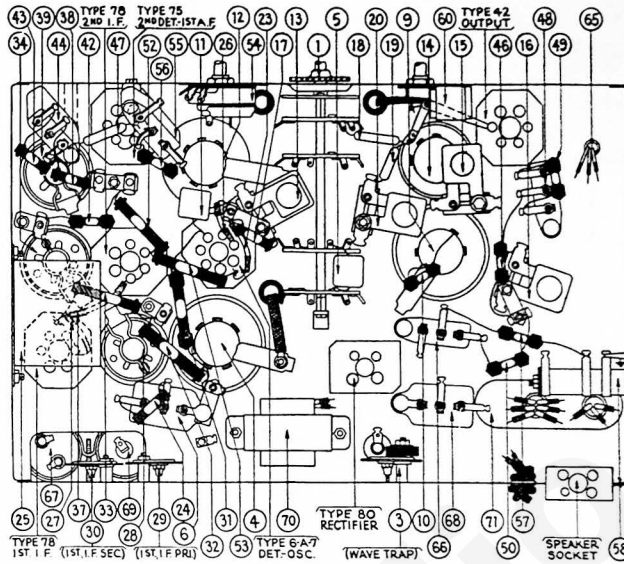


FIG. 4—Bottom View of Chassis, Showing Parts, and Position of Compensating Condensers Located, —and Reached,— from Below Chassis

REPLACEMENT PARTS FOR MODEL 44

No. on Figs.	Description	Part No.	No. on Figs.	Description	Part No.
①	Wave-Band Switch	42-1045	④⑥	Resistor (70,000) (Violet-Black-Orange)	5385
②	Tuning Condenser Assembly	31-1106	④⑦	Condenser (.00025)	5858
③	Wave Trap	38-5199	④⑧	Condenser (.01)	3903-A-N
④	Antenna Transformer (H. F. Bands)	32-1271	④⑨	Resistor (5 meg.) (Yellow-White-Yellow)	4517
⑤	Condenser (.00025)	5858	④⑩	Resistor (70,000) (Violet-Black-Orange)	5385
⑥	Condenser (Double) (.05-.05)	3615-A-M	④⑪	Pilot Lamp (Station Selector)	6608
⑦	Compensating Condenser (Ant.; H. F.) (Part of ②)		④⑫	Resistor (32,000) (Orange-Red-Orange)	3523
⑧	Compensating Condenser (Ant.; B'd'cst.) (Part of ②)		④⑬	Resistor (32,000) (Orange-Red-Orange)	3523
⑨	Antenna Transformer (B'd'cst. Bands)	32-1270	④⑭	Volume Control and "On-Off" Switch	33-5023
⑩	Resistor (10,000) (Brown-Black-Orange)	4412	④⑮	Condenser (.01)	3903-J
⑪	Condenser (.0008)	5878	④⑯	Resistor (1.0 meg.) (Brown-Black-Green)	4409
⑫	Oscillator Transformer (H. F. Bands)	32-1273	④⑰	Resistor (.1 meg.) (White-White-Orange)	4411
⑬	Compensating Condenser (Range 2)	04000-C	④⑱	Voltage Divider Resistor	33-3077
⑭	Oscillator Transformer (B'd'cst. Bands)	32-1272	④⑲	Condenser (.01) (Part of ④)	
⑮	Compensating Condenser (Osc.; Range 1)	04000-A	④⑳	Tone Control	30-4080
⑯	Compensating Condenser (B'd'cst.; Series)	04000-S	④㉑	Condenser (.015) (Part of ④)	
⑰	Resistor (25,000) (Red-Green-Orange)	4516	④㉒	Output Transformer (H-14)	2580
⑱	Condenser (.003)	6009	④㉓	Voice Coil and Cone Assembly (H-14)	02625
⑲	Condenser (.0007)	5863	④㉔	Speaker Field Coil and Pot Assembly (H-14)	02767
⑳	Compensating Condenser (Range 2; Series)	04000-R	④㉕	By-pass Condenser Block (3-section)	30-4087
㉑	Compensating Condenser (Osc.; Range 4) (Part of ②)		④㉖	Condenser (.05)	3615-H
㉒	Compensating Condenser (Osc.; Range 3) (Part of ②)		④㉗	Condenser (Electrolytic) (Double) (8.0-8.0)	30-2028
㉓	Resistor (200) (Flexible Wire-Wound) (Red-Black-Brown)	7217	④㉘	Condenser (Double) (.015-.015)	3793-H
㉔	Resistor (.1 meg.) (White-White-Orange)	4411	④㉙	Condenser (Electrolytic) (8.0)	30-2020
㉕	By-pass Condenser Block (6-section)	30-4077	④㉚	Filter Choke	5930
㉖	Resistor (200) (Flexible Wire-Wound) (Red-Black-Brown)	7217	④㉛	Power Transformer (50-80 cycle)	32-7137
㉗	Resistor (300) (Flexible Wire-Wound) (Orange-Black-Brown)	33-3010	④㉜	Tube Shield	28-1107
㉘	1st. I. F. Transformer	32-1274	④㉝	Four-Prong Tube Socket	7544
㉙	Compensating Condenser (1st. I. F. Pri.)	04000-J	④㉞	Six-Prong Tube Socket	7547
㉚	Compensating Condenser (1st. I. F. Sec.)	04000-J	④㉟	Seven-Prong Tube Socket	27-6005
㉛	Resistor (39,000) (Orange-White-Orange)	33-1027	④㊱	Speaker Socket	4957
㉜	Resistor (60,000) (Green-Brown-Orange)	3868	④㊲	Dial Scale (Station Selector)	27-5028
㉝	Resistor (13,000) (Brown-Orange-Orange)	3766	④㊳	Drum Assembly (Tuning Condenser)	31-1055
㉞	2nd. I. F. Transformer	32-1305	④㊴	Idle Shaft Assembly (Tuning Condenser)	31-1056
㉟	Compensating Condenser (2nd. I. F. Pri.)	31-9007,	④㊵	Tuning Shaft Assembly (Tuning Condenser)	31-1057
①	Compensating Condenser (2nd. I. F. Sec.)	(included as part of ②)	④㊶	Gear (Wave-Band Switch)	28-7012
②	Resistor (300) (Flexible Wire-Wound) (Orange-Black-Brown)	33-3010	④㊷	Knob (large)	27-4025
③	Resistor (2.0 meg.) (Red-Black-Green)	5872	④㊸	Knob (medium)	03063
④	3rd. I. F. Transformer	32-1307	④㊹	Knob (small)	03064
⑤	Compensating Condenser (3rd. I. F. Pri.)	31-9007,	④㊺	Knob Spring	5282
⑥	Compensating Condenser (3rd. I. F. Sec.)	(included as part of ⑤)	④㊻	Knob Screw (Brass) (Secures large knob to shaft)	W-267
⑦	Resistor (1,000) (Brown-Black-Red)	5837	④㊼	Basal	27-4039
⑧	Resistor (60,000) (Green-Brown-Orange)	4518	④㊽	Basal Mounting Screw	W-841
⑨	Condenser (Double) (.0001-.0001)	8038-K	④㊾	Basal Felt	6732
			④㊿	Mounting Bolt (Chassis)	W-567
			⑤	Mounting Washer (Chassis) (Rubber)	5189
			⑥	Mounting Washer (Chassis) (Steel)	5068
			⑦	Speaker (K-22) (Baby Grand Only)	
			⑧	Output Transformer	2580
			⑨	Voice Coil and Cone Assembly	26-3174
			⑩	Speaker Field Coil and Pot Assembly	02767